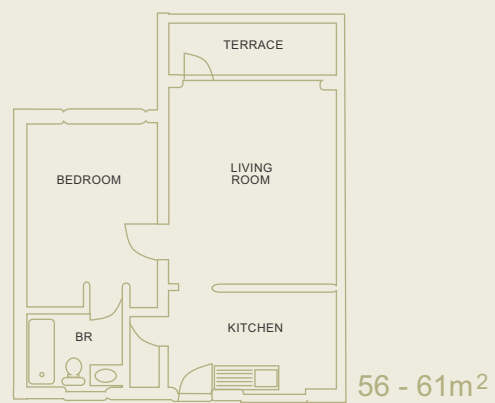




TYPICAL LAYOUT OF UNITS

One-bedroom unit

Bedsitter



A registered non-profit organisation that provides hope and
enables people to shape their purpose in life.

RAND AID ASSOCIATION . NON-PROFIT ORGANISATION
REGISTRATION NUMBER: 000 605 NPO

Contact details

Tarentaal Village
Complex Manager or Deputy Complex Manager
T: 011 - 882 2510
F: 011 - 443 4120
200 Cnr. Modderfontein & Wordsworth roads, Edenvale
Private Bag 890912, Highlands North 2037
www.randaid.co.za

GPS Co-ordinates

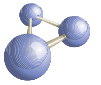
S26°07.709
E28°07.481



TARENTAAL VILLAGE



Tarentaal Village is situated on Modderfontein Road next to the Edenvale Hospital. This friendly village is set in spacious and secure grounds with generous garden areas.



Services offered (included in rental)

- Emergency call system.
- 24-hour security: Access control, patrolling personnel and electrified fencing with CCTV camera monitoring.
- Village sister for preventative nursing care.
- Garden service.
- Weekly servicing of apartments.
- Postal delivery.
- Recuperative care facilities (24 days p.a./unit).

The rental also covers the cost of rates, water and electricity, insurance of buildings, external maintenance and administration costs.

Other facilities available for the comfort of residents are:

- Inter-denominational chapel.
- E-media centre for sending and receiving emails to stay in touch with friends and family.
- Recreation centre comprising of a large, well-equipped hall with separate lounge area.
- Transport to shops and other amenities, which are in close proximity.
- Library and reading room.
- Laundrette.
- Visiting podiatrist, by appointment.

Tarentaal Village offers a total of 110 one-bedroom and 190 bedsitter apartments. All apartments are north facing and the kitchens are fully equipped with ample cupboard space. The units are carpeted, have telephone sockets and a connection to a central television aerial. The upstairs units have comfortable balconies whilst, the ground floor units have patios leading onto the garden. All facilities are built with the elderly in mind e.g. ramps instead of stairs and covered carports in close proximity to all apartments. In addition, a range of support services are offered, enabling residents the opportunity to remain independent for as long as possible.

All apartments are available on a rental basis only and to persons aged 65 years and over.

Should frail care be required by residents at Tarentaal Village, either temporarily or on a permanent basis, this is available at either Thembalami Care Centre, or at the Ron Smith Care Centre situated within the grounds of Elphin Lodge.

Rand Aid, a registered South African non-profit organisation, serves a dual purpose. Quality accommodation for the discerning retiree - which provides a portion of the funding needed to carry out its welfare work - assisting the aged in need, and people suffering from substance abuse.