

The Shadow

Broken, battered, emotionally shattered,
lonely, afraid, so many debts unpaid,
hopeless, lost, such a terrible cost

The shadow of the man I'd been
I come to Wedge Gardens so much to redeem

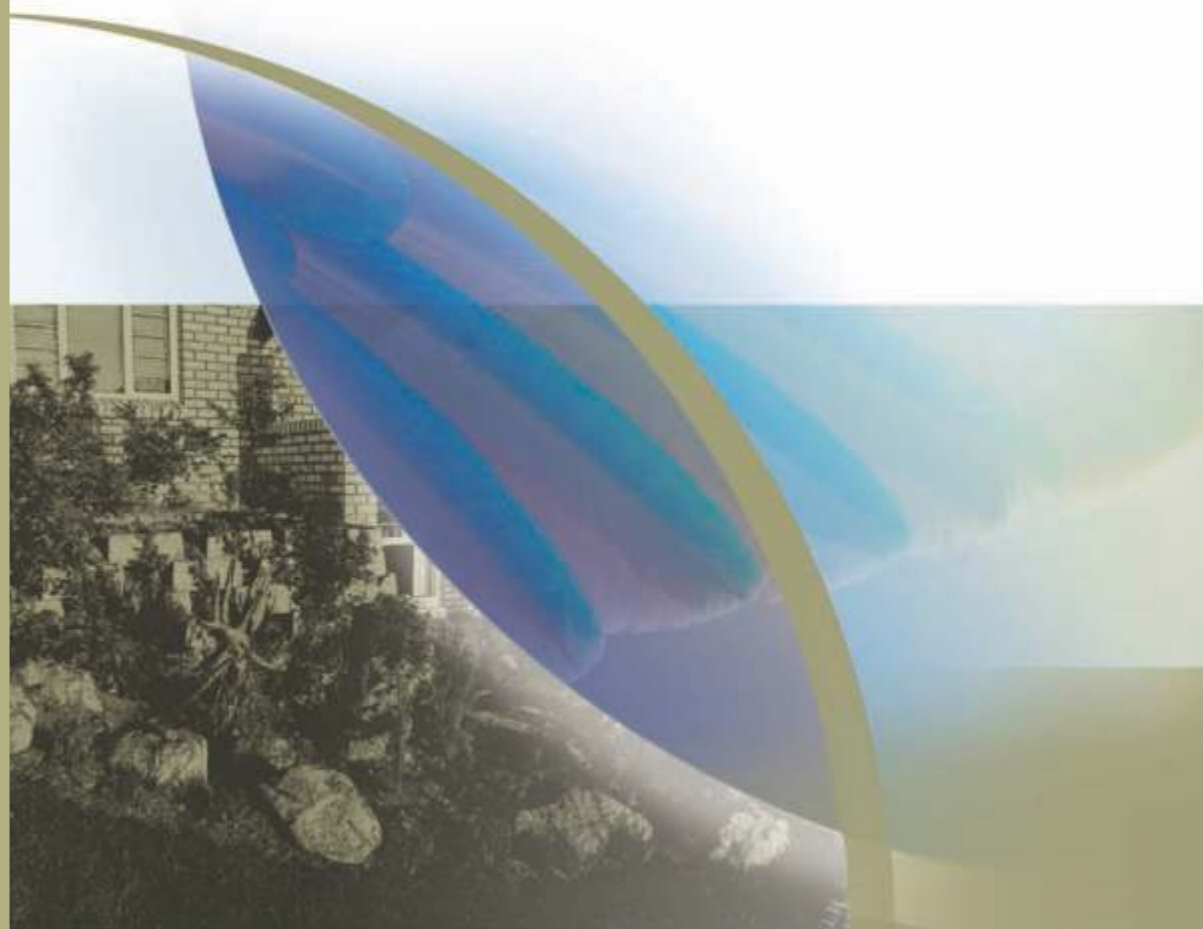
Food, shelter, life no longer a skelter,
therapy, medication, a new realisation,
compassion, care, allows me to dare -
Have hope, faith, dreams and courage

For dedication and efforts so often unsung
Thank you Wedge Gardens for all you have
done
The shadow has gone.

- left anonymously for Wedge Gardens staff -



WEDGE GARDENS TREATMENT CENTRE



A registered non-profit organisation that provides hope and
enables people to shape their purpose in life.

RAND AID ASSOCIATION . NON-PROFIT ORGANISATION
REGISTRATION NUMBER: 000 605 NPO

Contact details

Wedge Gardens Treatment Centre
Complex Manager or Deputy Complex Manager
T: 011 - 430 0320
F: 011 - 430 0377
2 Whitney Rd, Whitney Gardens
Lyndhurst
PO Box 1661, Highlands North 2037
www.randaid.co.za

GPS Co-ordinates

S26°07.504
E28°06.232



WEDGE GARDENS TREATMENT CENTRE

Defeating substance dependency



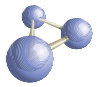
Rand Aid is in need of funding to continue its valuable work. You can make a difference to the lives of many by simply making a donation directly

into our bank account:

Standard Bank Bramley.

Account Number: 001788701

Branch Code: 004005



Full Circle Recovery Programme

Addiction rehabilitation in South Africa was traditionally based on a client centred approach, with less emphasis on reintegration back into the community. Rand Aid's Wedge Gardens Treatment Centre has pioneered work towards rehabilitation based on an holistic approach which is available to local and international clients.

Although this type of rehabilitation had long been used by western society, this has not been the case in South Africa. Rand Aid used a mixed quantitative-qualitative study in 2005 and 2006, to explore the needs related to treatment at Wedge Gardens.

The study provided evidence that patients have to be equipped to be able to reintegrate with their significant others, as well as the community at large. Rand Aid thus developed an holistic programme based on multi-disciplinary integration, and recovery care.

Wedge Garden's Full Circle Recovery Programme for people battling substance addiction is an holistic, systematic, problem solving and reality therapy approach that makes use of professional counsellors including a clinical psychologist, social workers, medical practitioners, nursing practitioners and a spiritual therapist.

Core services

The Full Circle Recovery Programme's core services include detoxification, in-house treatment, family sessions, family accommodation, a halfway house, after care services, and outreach programmes.

Detoxification

Wedge Gardens offers an affordable fee structure for the client and a choice of single accommodation en-suite, or double accommodation with shared facilities.

In-house treatment

Wedge Garden's in-house treatment is set in tranquil surroundings, enabling the client to feel more comfortable from the start. Treatment is divided into three phases including assessment, intervention and reintegration.

The client is assessed on their social, emotional, psychological, mental, spiritual, and physical circumstances.

The intervention phase consists of individual and group therapy sessions which includes interactional analysis group therapy, structured group therapy, lectures and social skills development groups.

The reintegration phase includes an in-house family participative session, and the introduction to support fellowships like the AA.

Halfway house

The halfway house is equipped for site visits for international clients and also facilitates reintegration into society as clients can reside at the centre while working for an outside party.

After care services

After care includes group sessions twice a month, as well as for individuals on request.

Rand Aid, a registered South African non-profit organisation, serves a dual purpose. Quality accommodation for the discerning retiree - which provides a portion of the funding needed to carry out its welfare work - assisting the aged in need, and people suffering from substance abuse.